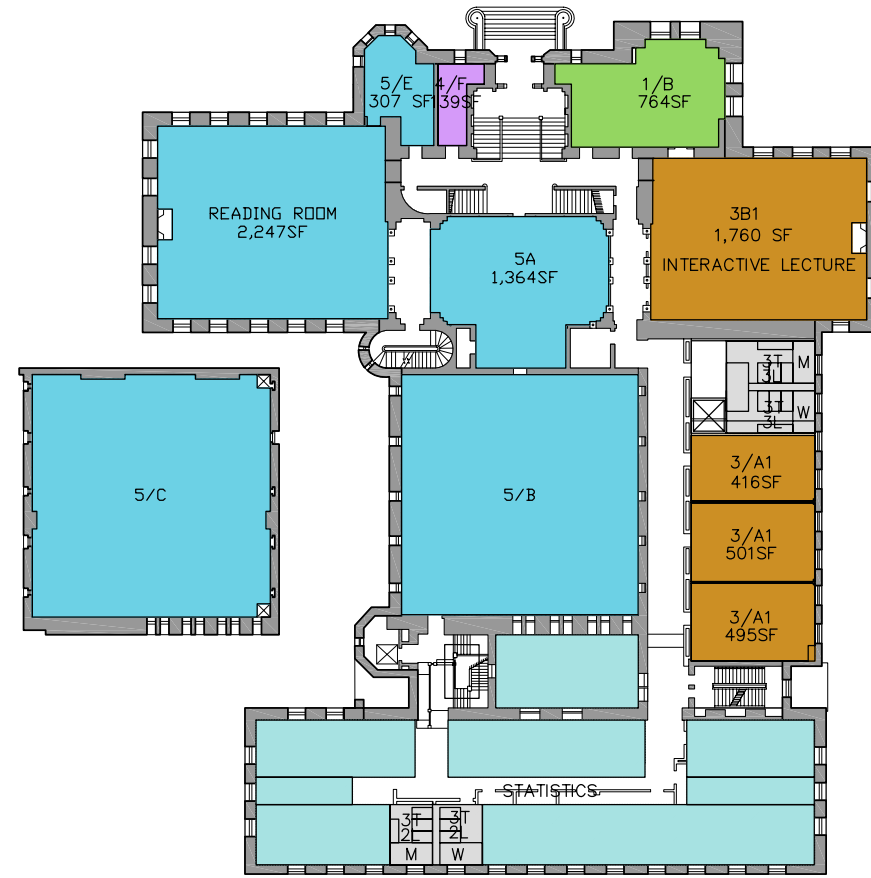


SCHEME B

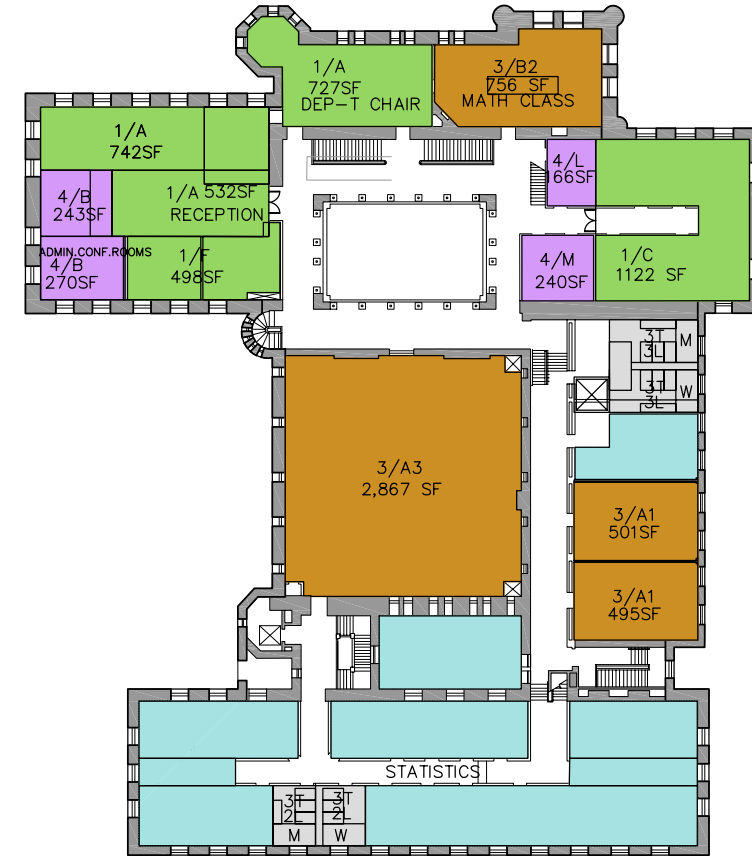
ALL ADMIN AND CLASSROOMS IN ALTGELD
 STATISTICS IN ALTGELD
 RELOCATE POST OFFICE
 BUILD-OUT LIGHTWELL



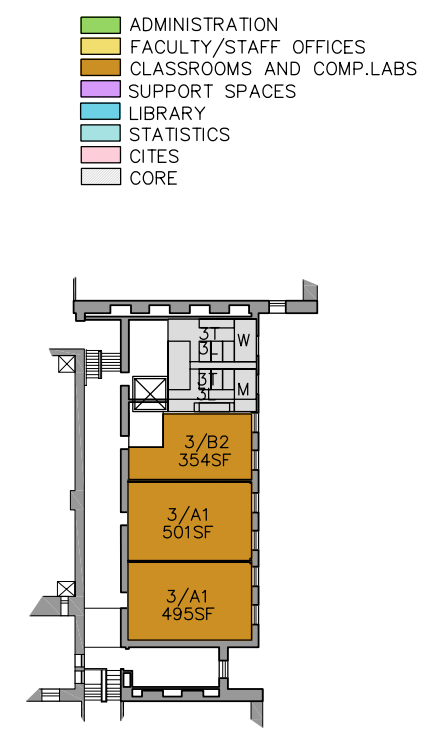
FIRST FLOOR PLAN



SECOND FLOOR PLAN



THIRD FLOOR PLAN



FOURTH FLOOR PLAN

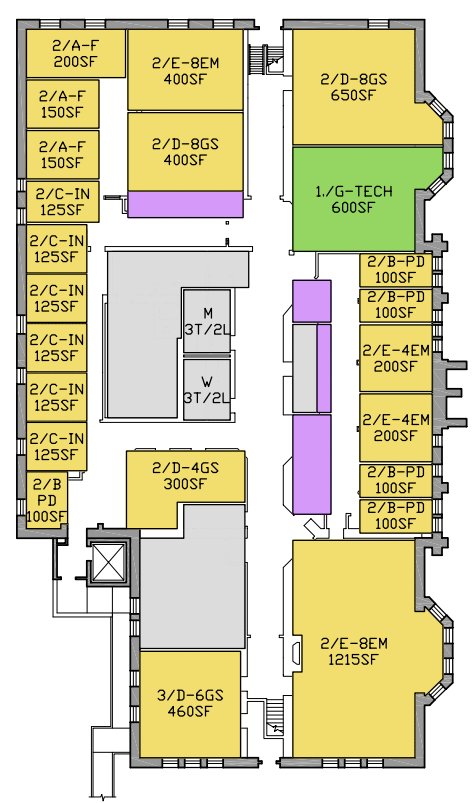
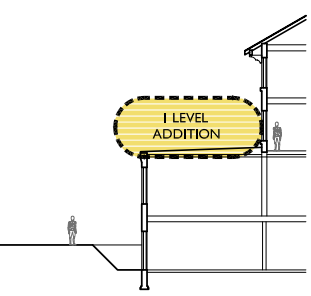
- ADMINISTRATION
- FACULTY/STAFF OFFICES
- CLASSROOMS AND COMP.LABS
- SUPPORT SPACES
- LIBRARY
- STATISTICS
- CITES
- CORE

ALTGELD HALL PROGRAM SUMMARY

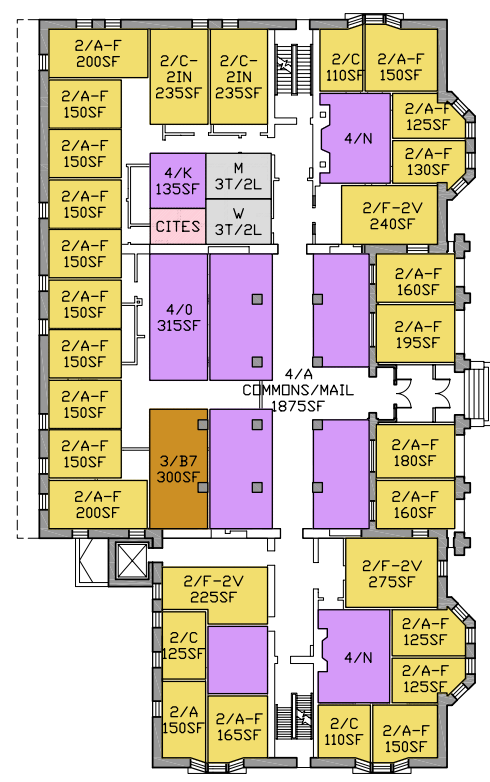
- | | | | | | | |
|--|---|---|---|--|---|---|
| <p>1 ADMINISTRATION</p> <ul style="list-style-type: none"> A DEPT. CHAIR - 2025SF B GRADUATE OFFICE - 525SF C UNDERGRAD OFFICE - 1125SF D COMMUNICATIONS - 150SF E ACTURIAL SCIENCE - 300SF F JOURNAL - 400SF G TECHNOLOGY - SEE ILLINI H NETMATH - 825SF | <p>2 FACULTY AND STAFF OFFICES</p> <p>SEE ILLINI</p> <p>3 CLASSROOM AND COMPUTER LABS</p> <p>A UNIVERSITY CLASSROOMS</p> <ul style="list-style-type: none"> 1 TYP. CLASSROOMS - 14 @ 500SF 2 LARGE CLASSROOM - 1000SF 3 LARGE LECTURE - 2900SF 4 SEMINAR - 378SF 5 MERIT - 375SF | <p>B MATH DEPARTMENT CLASSROOMS</p> <ul style="list-style-type: none"> 1 INTERACTIVE LECT. - 1787SF 2 MATH CLASSROOM - 2 @ 375SF 3 COMPUTER LAB 1 - 450SF 4 COMPUTER LAB 2 - 900SF 5 COMPUTER LAB 3 - 1350SF 6 MERIT - 375SF 7 SEMINAR - SEE ILLINI | <p>4 SUPPORT SPACES</p> <ul style="list-style-type: none"> A COMMONS - SEE ILLINI B CONFERENCE ROOM - 2 @ 240SF D STORAGE - 3 @ 80SF E IT/CITES - 1 @ 80SF, 3 @ 40SF F WORKROOM - 2 @ 125SF G JANITORS CLOSETS - 4 @ 24SF H SUPPLIES - 1 @ 24SF | <p>I LIGHTBULB STORAGE - 1 @ 60SF</p> <p>J MAILROOM - SEE ILLINI</p> <p>K FACULTY/COPYROOM - SEE ILLINI</p> <p>L ADMIN BREAK ROOM - 300SF</p> <p>M UNDERGRAD LOUNGE - 300SF</p> <p>N TEAMING SPACES - SEE ILLINI</p> <p>O COMMONS PANTRY - SEE ILLINI</p> | <p>5 LIBRARY (ALL AS EXISTING)</p> <ul style="list-style-type: none"> A CIRCULATION/LOBBY B STACKS C STACKS D STACKS E LIBRARY OFFICE | <p>NOT INCLUDED 2700SF (~6%)</p> <ul style="list-style-type: none"> 4 C TUTORING - 2 @ 600SF ~1500SF OF STATISTICS PROGRAM |
|--|---|---|---|--|---|---|

SCHEME B
 ALL FACULTY IN ILLINI HALL
 CITES RELOCATED
 ONE STORY ADDITION
 GRADE AT WEST ELEVATION MODIFIED

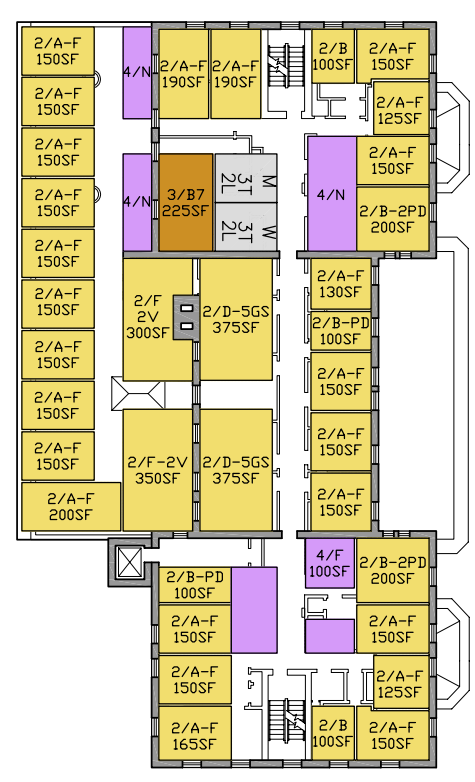
- ADMINISTRATION
- FACULTY/STAFF OFFICES
- CLASSROOMS AND COMP.LABS
- SUPPORT SPACES AND COMMONS
- LIBRARY
- STATISTICS
- CITES
- CORE



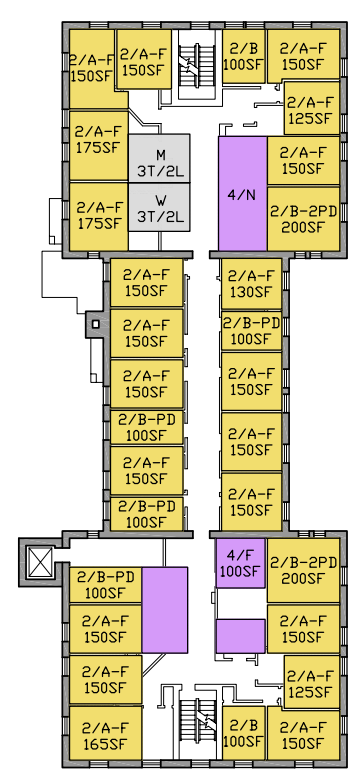
BASEMENT PLAN
 03 FACULTY
 05 POST DDCS
 06 INSTRUCTORS
 26 GRAD STUDENTS
 24 EMERITUS



FIRST FLOOR PLAN
 22 FACULTY
 07 INSTRUCTORS
 06 VISITORS



SECOND FLOOR PLAN
 25 FACULTY
 07 POST DDCS
 10 GRAD STUDENTS
 04 VISITORS



THIRD FLOOR PLAN
 21 FACULTY
 10 POST DDCS

ILLINI HALL PROGRAM SUMMARY

- 1 ADMINISTRATION
 - A-F - SEE ALTGELD
 - G TECHNOLOGY - 600SF
 - H NETMATH - SEE ALTGELD
- 2 FACULTY AND STAFF OFFICES
 - A FACULTY - 71 OFFICES (150SF)
 - B POST DDCS. - 22 OFFICES (100SF)
 - C INSTRUCTORS - 13 OFFICES (125SF)
 - D GRADUATE - 36 (75SF)
 - E EMERITUS - 8 (150SF) + 16 (50SF)
 - F VISITORS - 6 (150SF) + 4 (150SF)

- 3 CLASSROOM AND COMPUTER LABS
 - A UNIV. CLASSROOMS - SEE ALTGELD
 - B MATH DEPARTMENT CLASSROOMS
 - 1-6 - SEE ALTGELD
 - 7 SEMINAR - 2 @ 300SF

- 4 SUPPORT SPACES
 - A COMMONS - 1875SF
 - B CONFERENCE ROOM - SEE ALTGELD
 - C TUTORING - SEE ALTGELD
 - D STORAGE - 3 @ 80SF
 - E IT/CITES - 1 @ 80SF, 3 @ 40SF
 - F WORKROOM - 2 @ 125SF
 - G JANITORS CLOSETS - 4 @ 24SF
 - H SUPPLIES - 1 @ 24SF

- I LIGHTBULB STORAGE - 1 @ 60SF
- J MAILROOM W/ STAFF - 500SF
- K FACULTY/COPYROOM - 200SF
- L ADMIN BREAK ROOM - 300SF
- M UNDERGRAD LOUNGE - SEE ALTGELD
- N TEAMING SPACES - 3 @ 350SF
- O COMMONS PANTRY - 150SF

NOT INCLUDED

- SOME POST DDCS. SHARE OFFICES
- SOME INSTRUCTORS SHARE OFFICES
- ALL EMERITUS SHARE OFFICES
- ALL VISITORS SHARE OFFICES