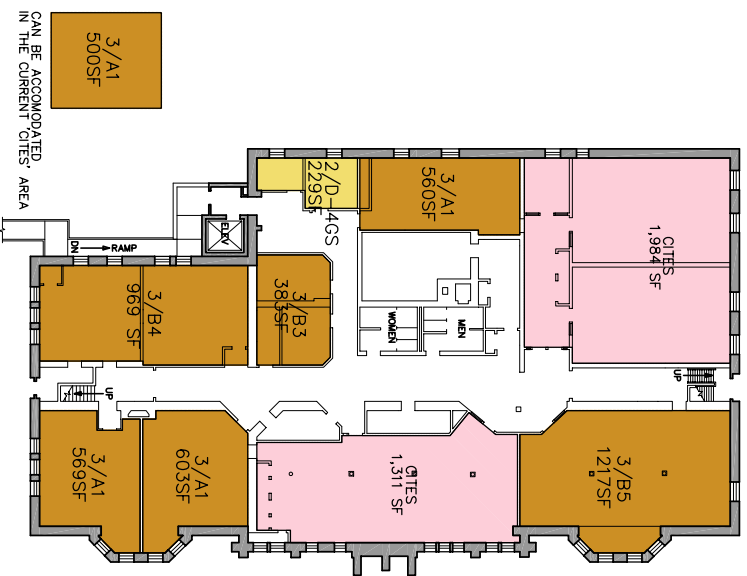
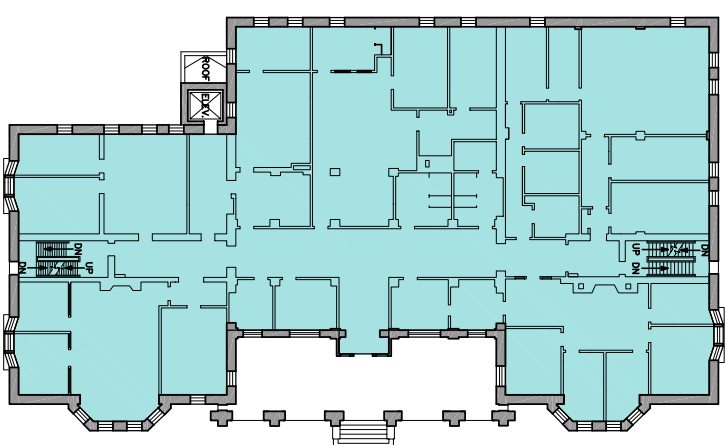


SCHEME 3

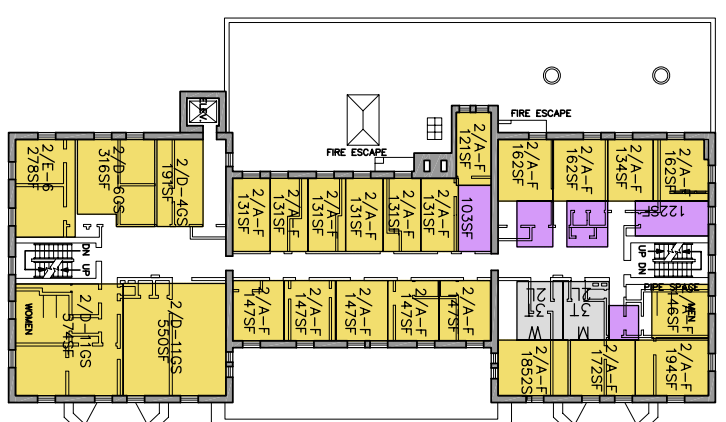
- ADMINISTRATION
- FACULTY/STAFF OFFICES
- CLASSROOMS AND COMP.LABS
- SUPPORT SPACES AND COMMONS
- LIBRARY
- STATISTICS
- CITES
- CORE



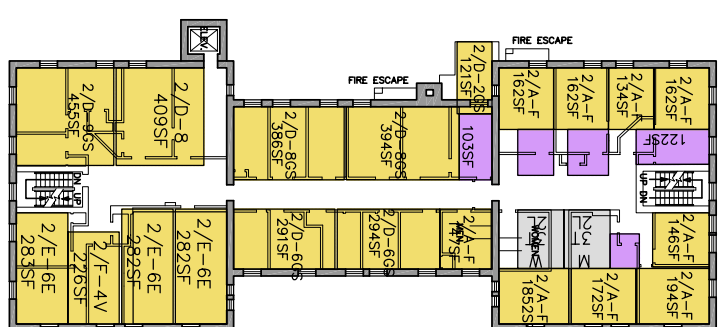
FIRST FLOOR PLAN



SECOND FLOOR PLAN



THIRD FLOOR PLAN



FOURTH FLOOR PLAN

SCHEME 3

ALTGELD HALL PROGRAM SUMMARY

- 1 ADMINISTRATION
 - A DEP-T CHAIR - 3D FLOOR
 - B GRADUATE OFFICE - 3D FLOOR
 - C UNDERGRADUATE OFFICE - 2ND FLOOR
 - D COMMUNICATIONS - 1ST FLOOR
 - E ACTUARIAL SCIENCE - 3D FLOOR
 - F JOURNAL - 3D FLOOR
 - G TECHNOLOGY - 1ST FLOOR
- 2 FACULTY AND STUFF
 - A FACULTY - 33 OFFICES, 1,2,3 FLOOR
 - B POSTDOCS - 20 OFFICES, 1ST,2ND FLOOR
 - C INSTRUCTORS - 12 OFFICES, 1ST,2ND FLOOR
 - D GRAD.STUDENTS - 27 OFFICES, 1,2,3 FLOOR
- 3 CLASSROOMS AND COMPUTER LABS
 - A UNIVERSITY CLASSROOMS
 - 1 STANDARD CLASS - 10, 1,2,3,4 FLOOR
 - 2 LARGE CLASS - 1, 1ST FLOOR
 - 3 LARGE LECTURE - 1, 3D FLOOR
 - 4 SEMINAR - 1, 1ST FLOOR
 - B MATH DEPT-T CLASSROOMS
 - 1 INTERACTIVE LECTURE - 1, 2ND FLOOR
 - 2 MATH.CLASSROOM - 2, 3D FLOOR
- 4 SUPPORT SPACES
 - A COMMONS - 2ND FLOOR
 - B CONFERENCE ROOMS - 2, 2ND FLOOR
 - C TUTORING - 3, 2,3,4 FLOOR
 - E IT/CITES - 1ST FLOOR
 - F WORKROOM - 3, 1,2,3 FLOOR
 - G LIBRARY
 - H ALL AS EXISTING

ILLINI HALL PROGRAM SUMMARY

- 1 ADMINISTRATION
 - H NETMATH PROGRAM - BASEMENT
- 2 STAFF OFFICES
 - A FACULTY - 29 OFFICES, 3D, 4TH FLOOR
 - D GRAD.STUDENTS - 83 OFFICES, BS,3,4 FLOOR
 - E EMERITUS - 24 OFFICES, 3,4 FLOOR
 - F VISITORS - 4 OFFICES, 4TH FLOOR
- 3 CLASSROOMS AND COMPUTER LABS
 - A UNIVERSITY CLASSROOMS
 - 1 STANDARD CLASS - 3, BASEMENT
 - B MATH DEPT-T CLASSROOMS
 - 3 COMPUTER LAB 1 - BASEMENT
 - 4 COMPUTER LAB 2 - BASEMENT
 - 5 COMPUTER LAB 3 - BASEMENT
 - PROGRAM NOT INCLUDED
 - 3 CLASSROOMS AND COMPUTER LABS
 - 1 STANDARD CLASS - 1

