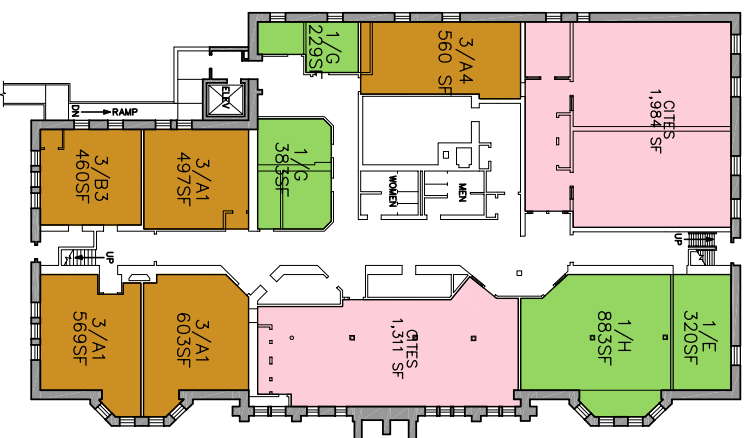
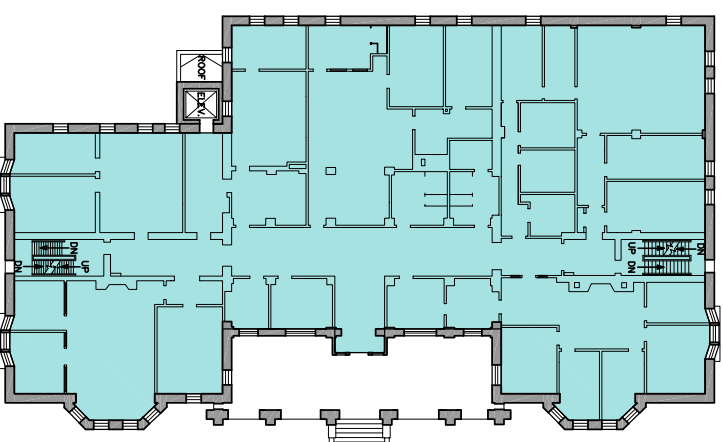


SCHEME 2

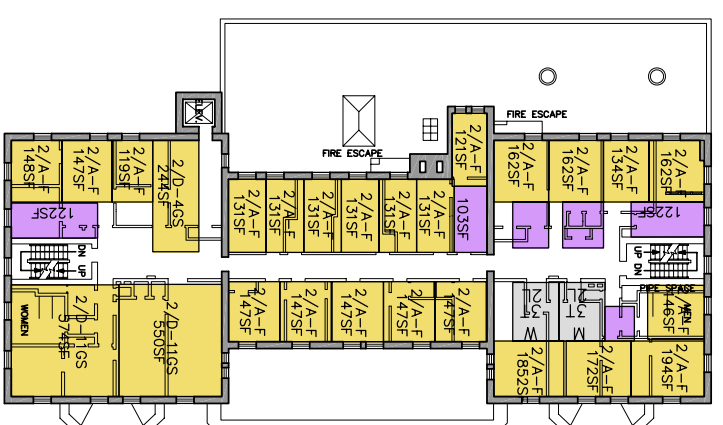
- ADMINISTRATION
- FACULTY/STAFF OFFICES
- CLASSROOMS AND COMP. LABS
- SUPPORT SPACES AND COMMONS
- LIBRARY
- STATISTICS
- CITES
- CORE



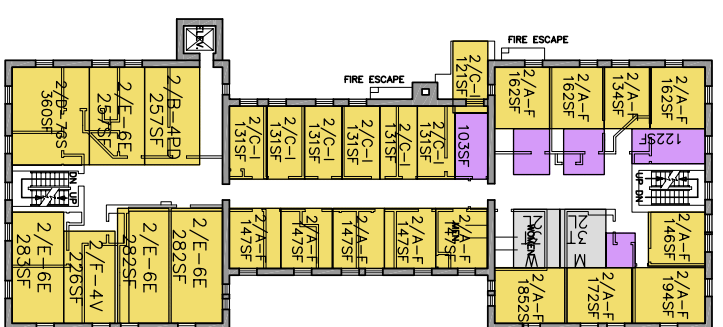
FIRST FLOOR PLAN



SECOND FLOOR PLAN



THIRD FLOOR PLAN



FOURTH FLOOR PLAN

SCHEME 2

ALTGELD HALL PROGRAM SUMMARY

- 1 ADMINISTRATION
 - A DEP-T CHAIR - 2ND FLOOR
 - B GRADUATE OFFICE - 3D FLOOR
 - C UNDERGRADUATE OFFICE - 2ND FLOOR
 - D COMMUNICATIONS - 2ND FLOOR
 - F JOURNAL - 2ND FLOOR
- 2 FACULTY AND STUFF
 - A FACULTY - 26 OFFICES, 1ST, 3D FLOOR
 - B POSTDOCS - 16 OFFICES, 1ST,3D FLOOR
 - C INSTRUCTORS - 5 OFFICES, 3D FLOOR
 - D GRAD.STUDENTS - 27 OFFICES, 1ST,3D FLOOR
- 3 CLASSROOMS AND COMPUTER LABS
 - A UNIVERSITY CLASSROOMS
 - 1 STANDARD CLASS - 11, 1,2,3,4 FLOOR
 - 2 LARGE CLASS - 1, 1ST FLOOR
 - 3 LARGE LECTURE - 1, 3D FLOOR
 - B MATH DEPT-T CLASSROOMS
 - 1 INTERACTIVE LECTURE - 1, 2ND FLOOR
 - 2 MATH CLASSROOM - 2, 3D FLOOR
 - 4 COMPUTER LAB 2 - 1ST FLOOR
 - 5 COMPUTER LAB 3 - 1ST FLOOR
- 4 SUPPORT SPACES
 - A COMMONS - 2ND FLOOR
 - B CONFERENCE ROOMS - 2, 2ND FLOOR
 - C TUTORING - 4, 1,2,3,4 FLOOR
 - E IT/CITES - 1ST FLOOR
 - F WORKROOM -3, 1,2,3 FLOOR
- 5 LIBRARY
 - ALL AS EXISTING

ILLINI HALL PROGRAM SUMMARY

- 1 ADMINISTRATION
 - A FACULTY - 36 OFFICES, 3D, 4TH FLOOR
 - B POSTDOCS - 4 OFFICES, 4TH FLOOR
 - C INSTRUCTORS - 7 OFFICES, 4TH FLOOR
 - D GRAD.STUDENTS - 38 OFFICES, 3,4 FLOOR
 - E EMERITUS - 24 OFFICES, 4TH FLOOR
 - F VISITORS - 4 OFFICES, 4TH FLOOR
- 2 STAFF OFFICES
 - A ACTUARIAL SCIENCE - BASEMENT
 - G TECHNOLOGY - BASEMENT
 - H NETMATH PROGRAM - BASEMENT
- 3 CLASSROOMS AND COMPUTER LABS
 - A UNIVERSITY CLASSROOMS
 - 1 STANDARD CLASS - 3, BASEMENT
 - 4 SEMINAR - 1, BASEMENT
 - B MATH DEPT-T CLASSROOMS
 - 3 COMPUTER LAB 1 - BASEMENT
- PROGRAM NOT INCLUDED
 - 2 FACULTY AND STUFF
 - D GRAD.STUDENTS - 52

