

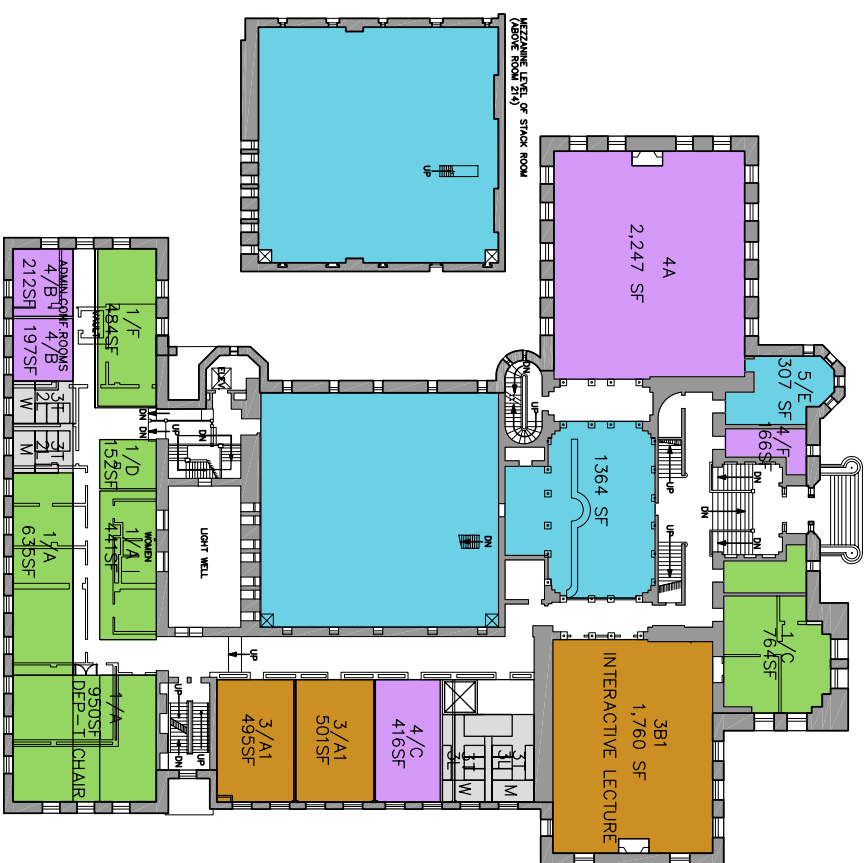
SCHEME 2

FACULTY OFFICES

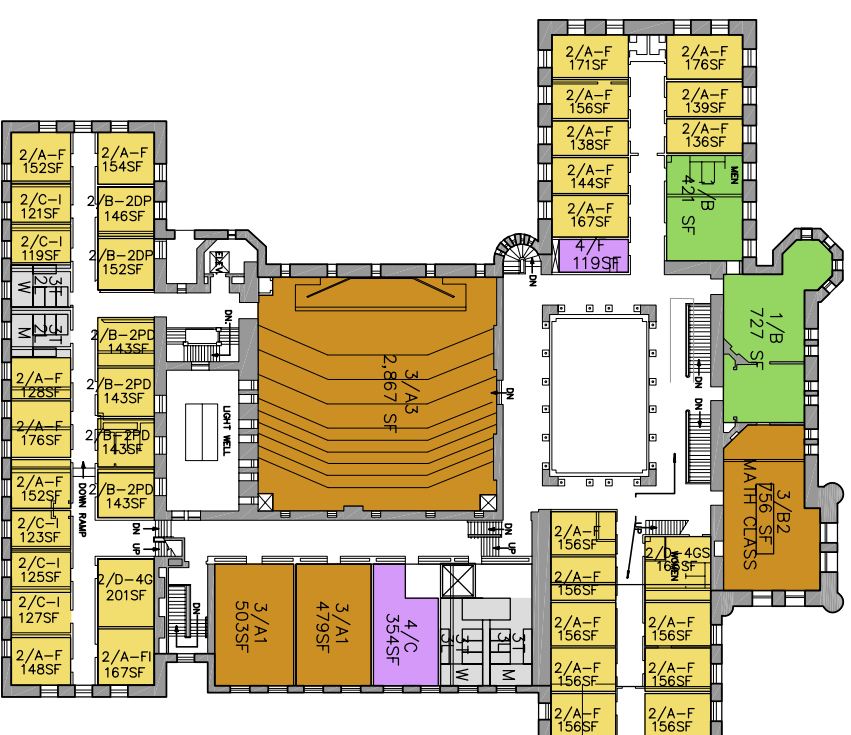
VERTICAL STRATIFICATION



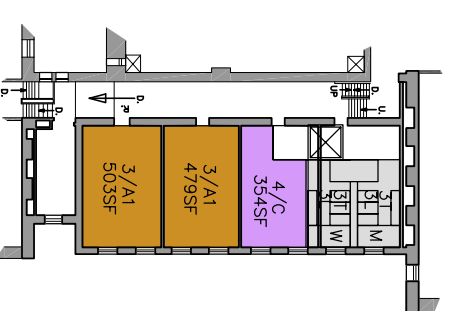
FIRST FLOOR PLAN



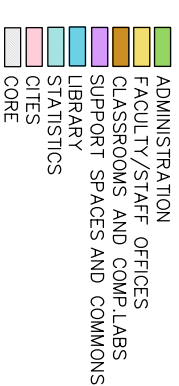
SECOND FLOOR PLAN



THIRD FLOOR PLAN



FOURTH FLOOR PLAN



- SCHEME 2**
ALTGELD HALL PROGRAM SUMMARY
- 1 ADMINISTRATION
 - A DEP-T CHAIR – 2ND FLOOR
 - B GRADUATE OFFICE – 3D FLOOR
 - C UNDERGRADUATE OFFICE – 2ND FLOOR
 - D COMMUNICATIONS – 2ND FLOOR
 - F JOURNAL – 2ND FLOOR

- 2 FACULTY AND STUFF
 - A FACULTY – 26 OFFICES, 1ST, 3D FLOOR
 - B POST.DOCS – 16 OFFICES, 1ST,3D FLOOR
 - C INSTRUCOTRS – 5 OFFICES, 3D FLOOR
 - D GRAD.STUDENTS – 27 OFFICES, 1ST,3D FLOOR

- 3 CLASSROOMS AND COMPUTER LABS
 - A UNIVERSITY CLASSROOMS
 - 1 STANDARD CLASS – 11, 1,2,3,4 FLOOR
 - 2 LARGE CLASS – 1, 1ST FLOOR
 - 3 LARGE LECTURE – 1, 3D FLOOR

- B MATH DEPT-T CLASSROOMS
 - 1 INTERACTIVE LECTURE – 1, 2ND FLOOR
 - 2 MATH CLASSROOM – 2, 3D FLOOR
 - 4 COMPUTER LAB 2 – 1ST FLOOR
 - 5 COMPUTER LAB 3 – 1ST FLOOR

- 4 SUPPORT SPACES
 - A COMMONS – 2ND FLOOR
 - B CONFERENCE ROOMS – 2, 2ND FLOOR
 - C TUTORING – 4, 1,2,3,4 FLOOR
 - E IT/CITRES – 1ST FLOOR
 - F WORKROOM – 3, 1,2,3 FLOOR

- ILLINI HALL PROGRAM SUMMARY**
- 1 ADMINISTRATION
 - A ACTUARIAL SCIENCE – BASEMENT
 - E TECHNOLOGY BASEMENT
 - G NEWMATH PROGRAM – BASEMENT
 - 2 STAFF OFFICES
 - A FACULTY – 36 OFFICES, 3D, 4TH FLOOR
 - B POST.DOCS – 4 OFFICES, 4TH FLOOR
 - C INSTRUCOTRS – 7 OFFICES, 4TH FLOOR
 - D GRAD.STUDENTS – 38 OFFICES, 3,4 FLOOR
 - E EMERITUS – 24 OFFICES, 4TH FLOOR
 - F VISITORS – 4 OFFICES, 4TH FLOOR

- 3 CLASSROOMS AND COMPUTER LABS
 - A UNIVERSITY CLASSROOMS
 - 1 STANDARD CLASS – 3, BASEME
 - 4 SEMINAR – 1, BASEMENT
 - B MATH DEPT-T CLASSROOMS
 - 3 COMPUTER LAB 1 – BASEMENT
- PROGRAM NOT INCLUDED
 - 2 FACULTY AND STUFF
 - D GRAD.STUDENTS – 52

