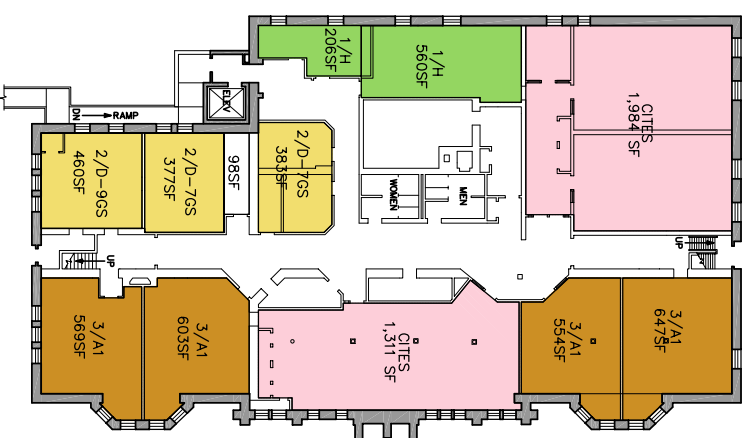
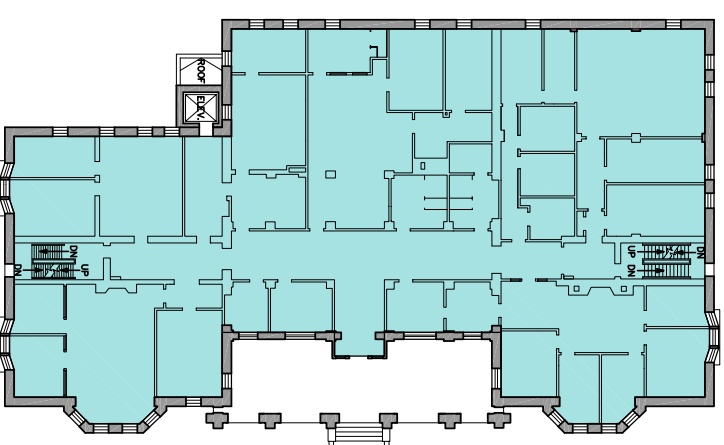


SCHEME 1

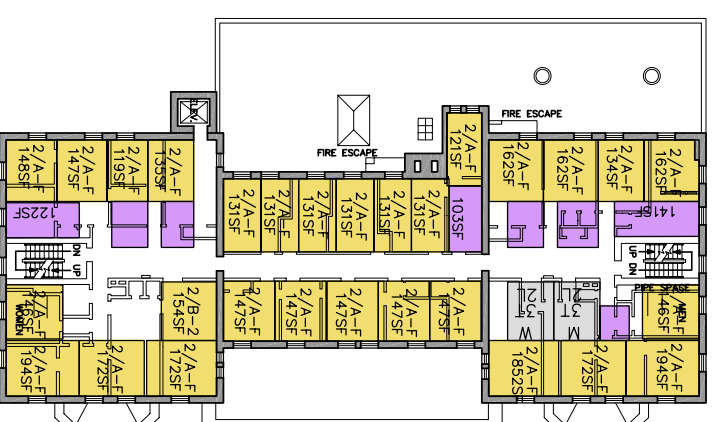
- ADMINISTRATION
- FACULTY/STAFF OFFICES
- CLASSROOMS AND COMP.LABS
- SUPPORT SPACES AND COMMONS
- LIBRARY
- STATISTICS
- CITES
- CORE



FIRST FLOOR PLAN



SECOND FLOOR PLAN



THIRD FLOOR PLAN



FOURTH FLOOR PLAN

SCHEME 1 ALTGELD HALL PROGRAM SUMMARY

- 1 ADMINISTRATION
 - A DEP-T CHAIR - 3D FLOOR
 - B GRADUATE OFFICE - 3D FLOOR
 - C UNDERGRADUATE OFFICE - 2ND FLOOR
 - D COMMUNICATIONS - 1ST FLOOR
 - E ACTUARIAL SCIENCE - 3D FLOOR
 - F JOURNAL - 3D FLOOR
 - G TECHNOLOGY - 1ST FLOOR
- 2 FACULTY AND STUFF
 - A FACULTY - 11 OFFICES, 1,3 FLOOR
 - B POST.DOCs - 8 OFFICES, 1,2,3, FLOOR
 - C INSTRUCTORS - 12 OFFICES, 1,3 FLOOR
 - D GRAD.STUDENTS - 6 OFFICES, 1ST FLOOR
 - E EMERITUS - 24 OFFICES, 1,4 FLOOR
 - F VISITORS - 4 OFFICES, 4TH FLOOR

- 3 CLASSROOMS AND COMPUTER LABS
 - A UNIVERSITY CLASSROOMS
 - 1 STANDARD CLASS - 10, 1,2,3 FLOOR
 - 2 LARGE CLASS - 1, 2ND FLOOR
 - 3 LARGE LECTURE - 1, 3D FLOOR
 - 4 SEMINAR - 1, 3D FLOOR

- B MATH DEPT-T CLASSROOMS
 - 1 INTERACTIVE LECTURE - 1, 2ND FLOOR
 - 2 MATH CLASSROOM - 2, 3D FLOOR
 - 3 COMPUTER LAB 1 - 1ST FLOOR
 - 4 COMPUTER LAB 2 - 1ST FLOOR
 - 5 COMPUTER LAB 3 - 1ST FLOOR

- 4 SUPPORT SPACES
 - A COMMONS - 2ND FLOOR
 - B CONFERENCE ROOMS - 2, 3D FLOOR
 - C TUTORING - 1ST,2ND,3D FLOOR
 - E IT/CITES - 1ST FLOOR
 - F WORKROOM - 3, 1,2,3 FLOOR
- 5 LIBRARY
 - ALL AS EXISTING

ILLINI HALL PROGRAM SUMMARY PROGRAM NOT INCLUDED

- 1 ADMINISTRATION
 - H NETMATH PROGRAM - BASEMENT
- 2 STAFF OFFICES
 - A FACULTY - 52 OFFICES
 - B POST.DOCs - 12 OFFICES
 - D GRAD.STUDENTS - 23 OFFICES
- 3 CLASSROOMS AND COMPUTER LABS
 - A UNIVERSITY CLASSROOMS
 - 1 STANDARD CLASS - 4, BASEMENT
- 2 FACULTY AND STUFF
 - D GRAD.STUDENTS - 81 OFFICES

