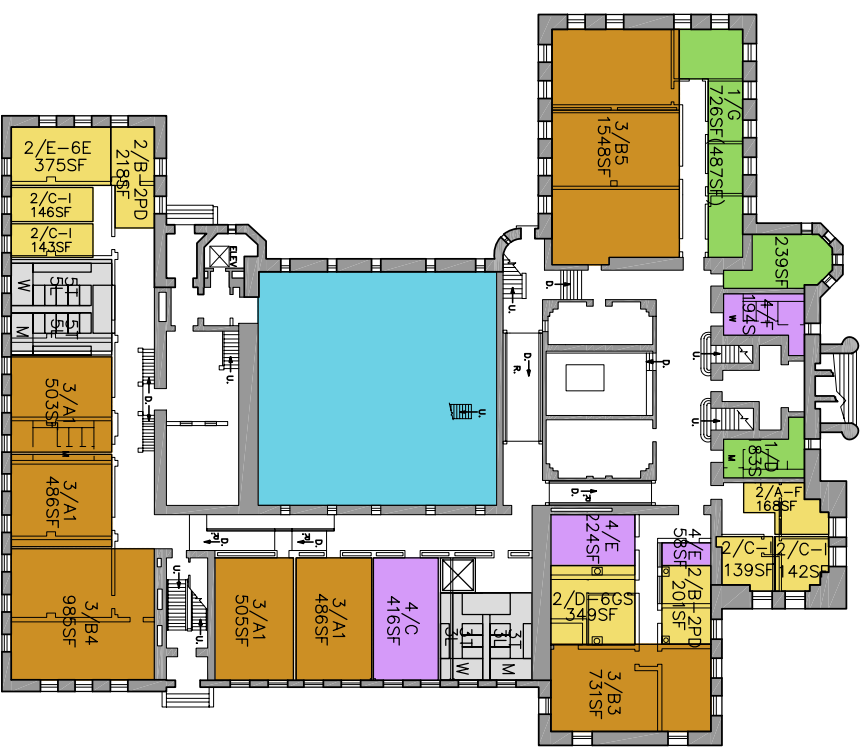


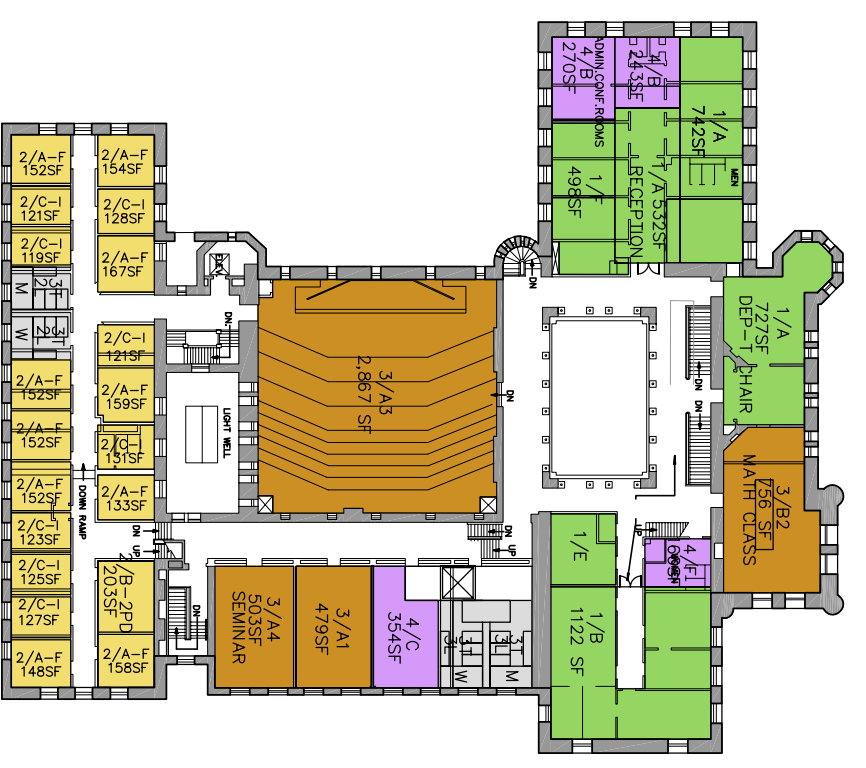
SCHEME 1
 HISTORICAL REPURPOSE
 PUBLIC EXPERIENCE
 HORIZONTAL STRATIFICATION



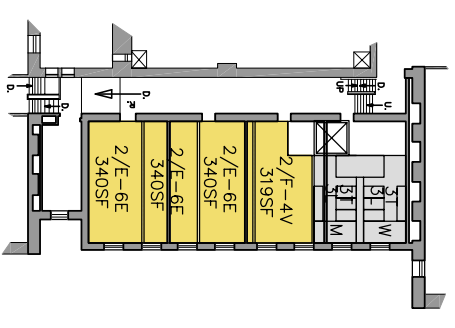
FIRST FLOOR PLAN



SECOND FLOOR PLAN



THIRD FLOOR PLAN



FOURTH FLOOR PLAN

- ADMINISTRATION
- FACULTY/STAFF OFFICES
- CLASSROOMS AND COMP LABS
- SUPPORT SPACES AND COMMONS
- LIBRARY
- STATISTICS
- CITES
- CORES

- SCHEME 1**
ALTGELD HALL PROGRAM SUMMARY
- 1 ADMINISTRATION**
 A DEP-T CHAIR - 3D FLOOR
 B GRADUATE OFFICE - 3D FLOOR
 C UNDERGRADUATE OFFICE - 2ND FLOOR
 D COMMUNICATIONS - 1ST FLOOR
 E ACTUARIAL SCIENCE - 3D FLOOR
 F JOURNAL - 3D FLOOR
 G TECHNOLOGY - 1ST FLOOR
- 2 FACULTY AND STUFF**
 A FACULTY - 11 OFFICES, 1,3 FLOOR
 B POSTDOCS - 8 OFFICES, 1,2,3 FLOOR
 C INSTRUCTORS - 12 OFFICES, 1,3 FLOOR
 D GRAD STUDENTS - 6 OFFICES, 1ST FLOOR
 E EMERITUS - 24 OFFICES, 1,4 FLOOR
 F VISITORS - 4 OFFICES, 4TH FLOOR
- 3 CLASSROOMS AND COMPUTER LABS**
 A UNIVERSITY CLASSROOMS
 1 STANDARD CLASS - 10, 1,2,3 FLOOR
 2 LARGE CLASS - 1, 2ND FLOOR
 3 LARGE LECTURE - 1, 3D FLOOR
 4 SEMINAR - 1, 3D FLOOR
- B MATH DEPT-T CLASSROOMS**
 1 INTERACTIVE LECTURE - 1, 2ND FLOOR
 2 MATH CLASSROOM - 2, 3D FLOOR
 3 COMPUTER LAB 1 - 1ST FLOOR
 4 COMPUTER LAB 2 - 1ST FLOOR
 5 COMPUTER LAB 3 - 1ST FLOOR
- 4 SUPPORT SPACES**
 A COMMONS - 2ND FLOOR
 B CONFERENCE ROOMS - 2, 3D FLOOR
 C TUTORING - 1ST, 2ND, 3D FLOOR
 E IT/CITES - 1ST FLOOR
 F WORKROOM - 3, 1,2,3 FLOOR
- 5 LIBRARY**
 ALL AS EXISTING

- ILLINI HALL PROGRAM SUMMARY**
- 1 ADMINISTRATION**
 H NEMATH PROGRAM - BASEMENT
- 2 STAFF OFFICES**
 A FACULTY - 52 OFFICES
 B POSTDOCS - 12 OFFICES
 D GRAD STUDENTS - 23 OFFICES
- 3 CLASSROOMS AND COMPUTER LABS**
 1 STANDARD CLASS - 4, BASEMENT

- PROGRAM NOT INCLUDED**
- 2 FACULTY AND STUFF**
 D GRAD STUDENTS - 81 OFFICES

